

# **Towards a consensus on adaptation in the East of England**

**East of England Net Zero and Climate Resilience Summit 2024**

*Emily Bolton, Climate Crisis Strategy Manager, Cambridgeshire County Council*

# Today's Workshop

11:50 **A Brief Intro to Climate Adaptation in the East Of England**

12:05 **Vision**

What does an adapted East of England look like?

12:20 **Collaboration**

Who are the stakeholders?

How do we bring our vision and stakeholders together?

12:40 **Reflections**

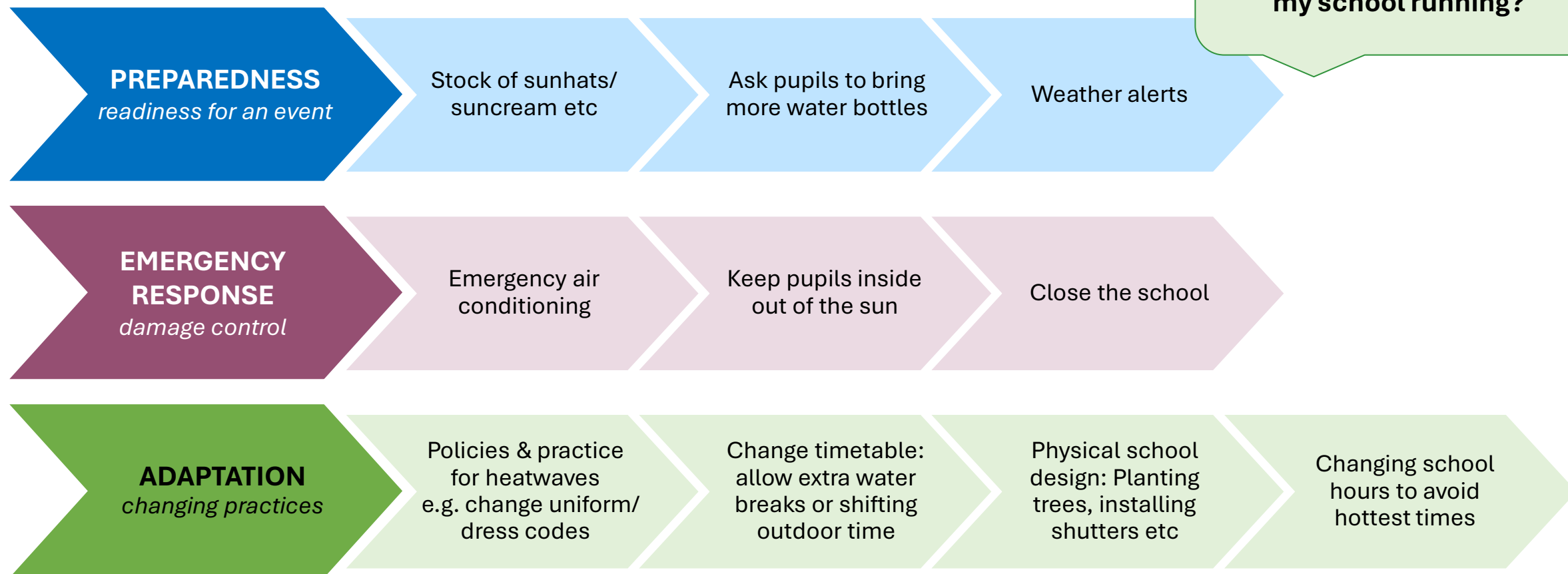
What are your top 5 next steps?

12:50 **Close**

# What is Climate Adaptation?

“taking actions to **reduce the negative impacts** of climate change and **build resilience** to climate-related shocks and stresses across all systems”

**Help, heatwaves are getting more common. How do I keep my school running?**



# Why do we need to adapt? (1)

## Environment, Health, Economy

**Climate is an exacerbator** – in the main we will have risks we already face, but they are likely to get more frequent and/or more severe

“The East of England is at the sharp end of climate change”. It already has:\*

It has the **lowest average rainfall**

**Highest average temperatures** in England

20% of the region is **below sea-level**

In some areas up to **25% of properties are at risk of flooding**

The **coastline is eroding** rapidly

- Cambridgeshire already has **10,000 homes and 100,000sqm commercial space on hold** due to EA requirements for water neutrality
- Across the Fens, **£1.8 billion investment needed over the next 100 years to sustain the current standard of service** from the existing flood risk management assets – before we even consider climate change as an exacerbator

Press release

### **Adapt or die, says Environment Agency**

The climate crisis is global, but **its impacts are in your village, your shop, your home.**

Adaptation action needs to be integral to government, businesses and communities .... especially when it **is much cheaper to invest early in climate resilience than to live with the costs of inaction.**

*Environment Agency, 2019*

# Why do we need to adapt? (2)



Storm Eunice in 2022 was the **most severe storm to affect England and Wales since 2014**



There has been an **increase in heavy rainfall** across the UK in recent decades



For the most recent decade (2013–2022) **UK winters have been 25% wetter than 1961–1990**



July 2022 set a **new UK all-time temperature record of 40.3°C in Lincs**



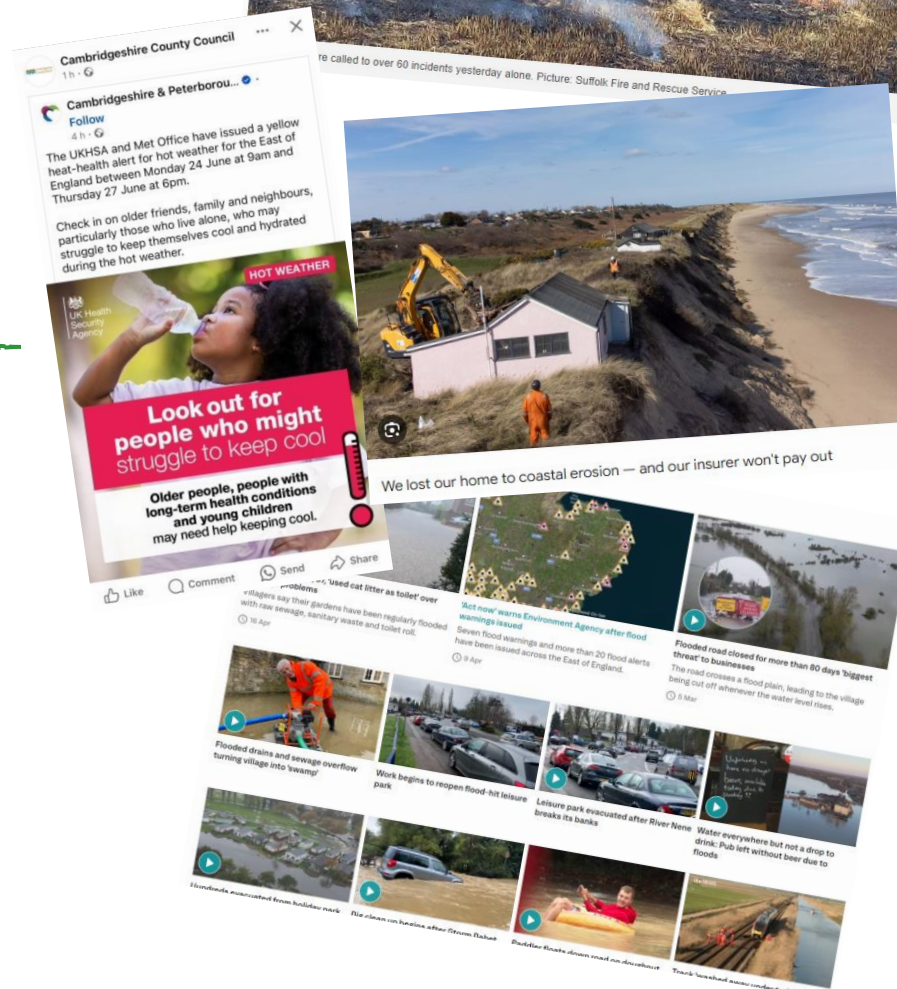
In Dec 2022, the UK experienced one of the **most significant spells of low winter temperatures since 2010**



**January–August was the driest across England and Wales since 1976, with drought status declared**

## Major incident declared by Suffolk Fire and Rescue Service still in place

By Ben Robinson - ben.robinson@liffepublishing.co.uk  
Published: 13:28, 20 July 2022 | Updated: 15:46, 20 July 2022

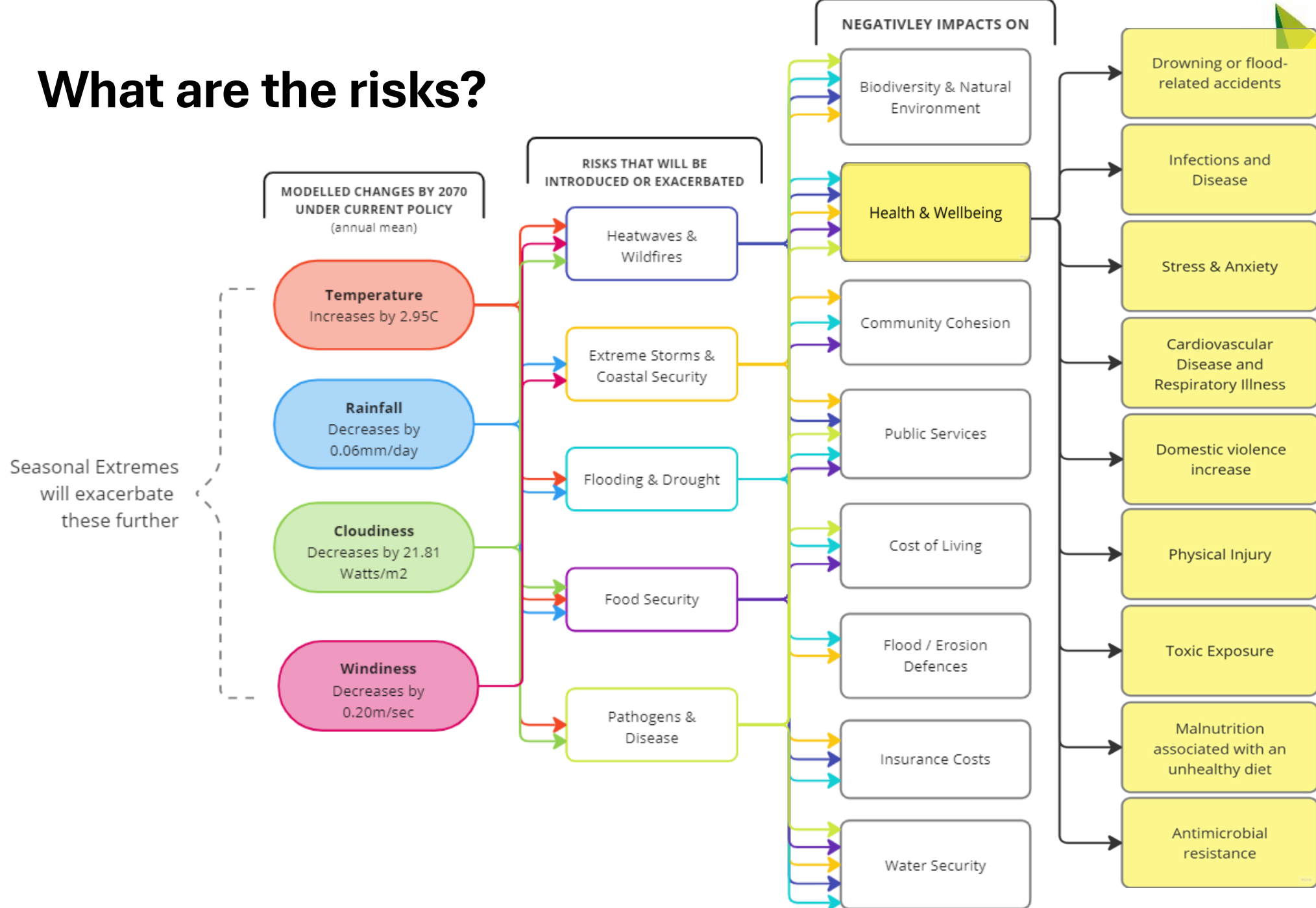


Current “emergencies” are becoming more common



A new BAU model will be needed

# What are the risks?

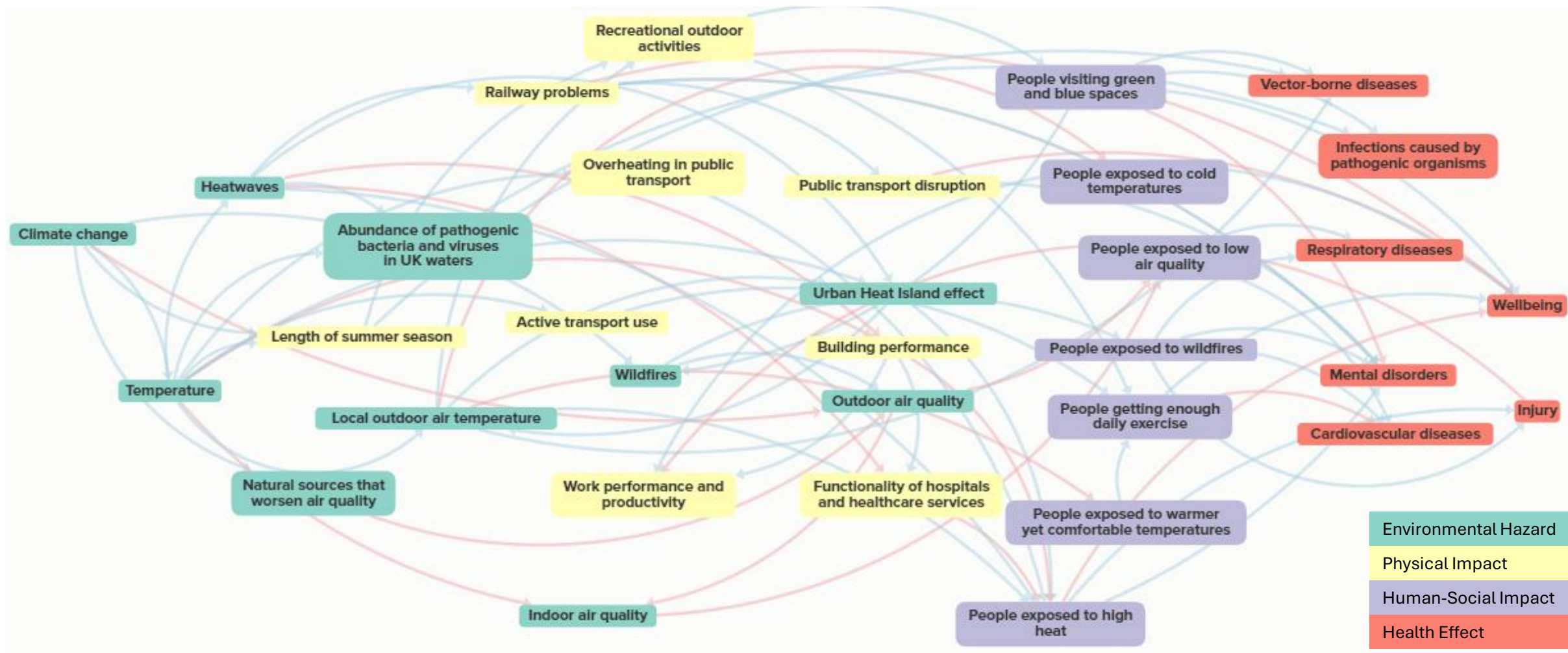


t of England  
Government Association

Loosely based on the Local  
Adaptation Tool (LCAT) using  
results for the East of  
England region, July 2024



# Cascading Climate Impacts



Summary of cascading impacts for temperature in the east of England

Adapted from: [www.lcat.uk](http://www.lcat.uk)

# National Position

- The **Climate Change Act** requires the government to prepare for a **changing climate**
- DEFRA are the accountable body for climate adaptation in England, and report via the National Adaptation Programme on:

protecting the natural  
**environment**

supporting **business** in adapting  
to climate change

protecting **buildings** and their  
surroundings  
(e.g. from hotter temperatures)

protecting **public health** and  
communities

adapting **infrastructure**  
(e.g. electricity networks and railways)

mitigating **international impacts**  
on the UK  
(e.g. on imported food supplies)

- Local government has responsibility for ensuring that the delivery of services locally is resilient to the impacts of the changing climate.

## How is the Policy Developed?

**Climate Change Committee** prepare an  
**Independent Assessment of UK Climate  
Change Risk** (next: 2026)



**DEFRA** produces the formal **Climate  
Change Risk Assessment (CCRA)**  
(next: 2027)



**DEFRA** produce **National Adaptation  
Programme (NAP)** to set out how they will  
oversee England's adaptation response  
(next: 2028)



# National Adaptation Programme

- NAP3 published 2023
- Widely deemed **insufficient** to prepare the UK
- **Fails to set out a “compelling vision for what a well-adapted UK entails”**
- Key criticism include:
  - Lack of tangible, practical guidance
  - Any resourcing or funding for (e.g.) local authorities to focus on adapting their areas
  - Limited capacity in DEFRA to support organisations
- Friends of the Earth – Judicial review on NAP3 23<sup>rd</sup> & 24<sup>th</sup> July



# East of England Position

- RCCF: Phase 1 Baseline Analysis
  - State of play across priority areas
- Adaptation action is mixed across the region
  - A **wide range of approaches**, ambitions and action in place already
  - Most work focussed on **flood risk** wrapped up under the **planning umbrella**: SPDs, Local Plans etc

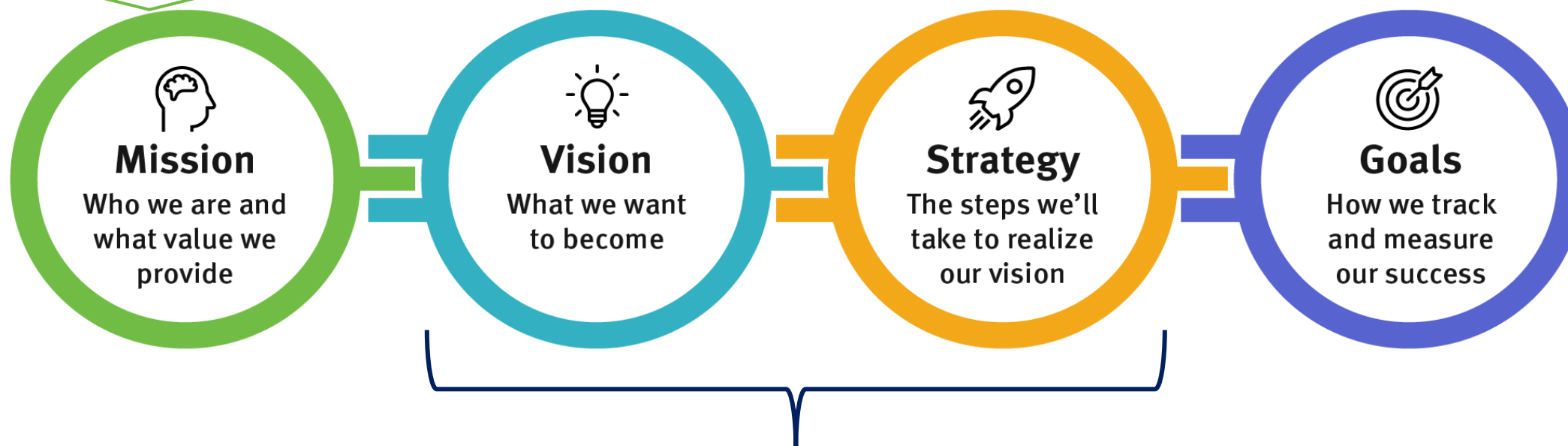
## Key recommendation

“Consider **development of a regional strategy for...adaptation providing a common framework** for action”

| Priority Area                               | Progress |
|---|----------|
| Biodiversity and natural environment        |          |
| Adaptation to climate change                |          |
| Retrofit and sustainable housing            |          |
| Sustainable energy                          |          |
| Sustainable travel                          |          |
| Sustainable economic growth and development |          |
| Social equity and health                    |          |
| Waste, recycling and the circular economy   |          |
| Procurement                                 |          |
| Behavioural change and communications       |          |

# Starting to think about a common framework...

*To provide regional-level support for local authorities in achieving their climate change related targets, adding real value to the work already being undertaken locally and reducing duplication*



In this workshop we are focussing on a  
**COLLECTIVE VISION** and **COLLABORATION**  
to move us towards thinking about next steps for a  
**strategic approach to adaptation**

# What makes a strong **vision** statement?

Meaningful vision or mission statements tend to have 4 key components:

01

Describe the  
future you want  
to see

02

Describe why  
you want it

03

Describe what  
success looks  
like

04

Describe a  
measurable goal

## Q1: What does an adapted East of England look like?

Discuss each of the 4 stages and develop a single statement for each stage.

*Think about:*

- *How far do we need to adapt?*
- *What is an acceptable level of residual risk for the region?*
- *Motivations; environmental and beyond*
- *Achievable vs ambitious?*

Write your statement on the flip chart.

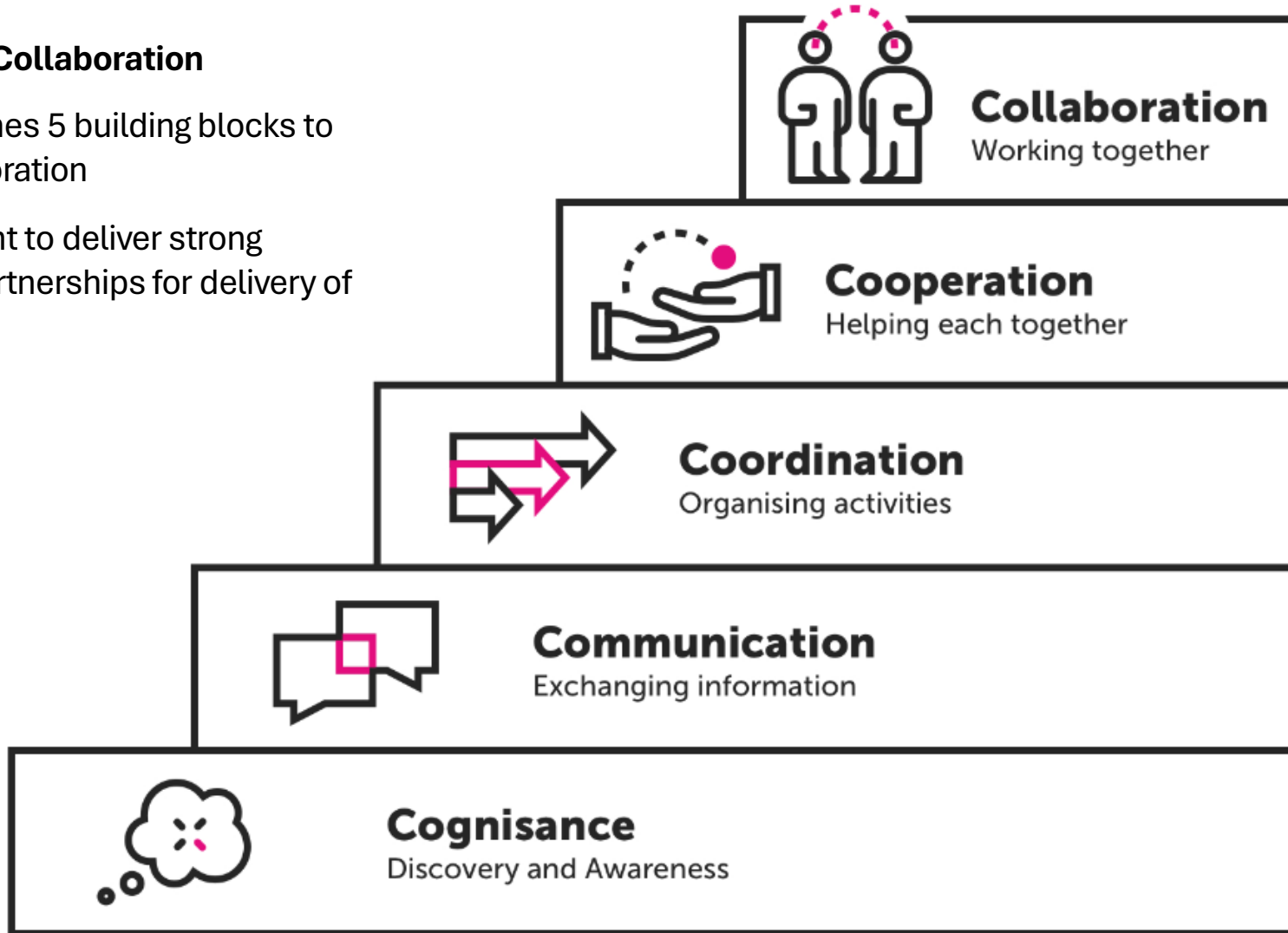




# How can we **collaborate** to achieve this vision?

## A Framework For Collaboration

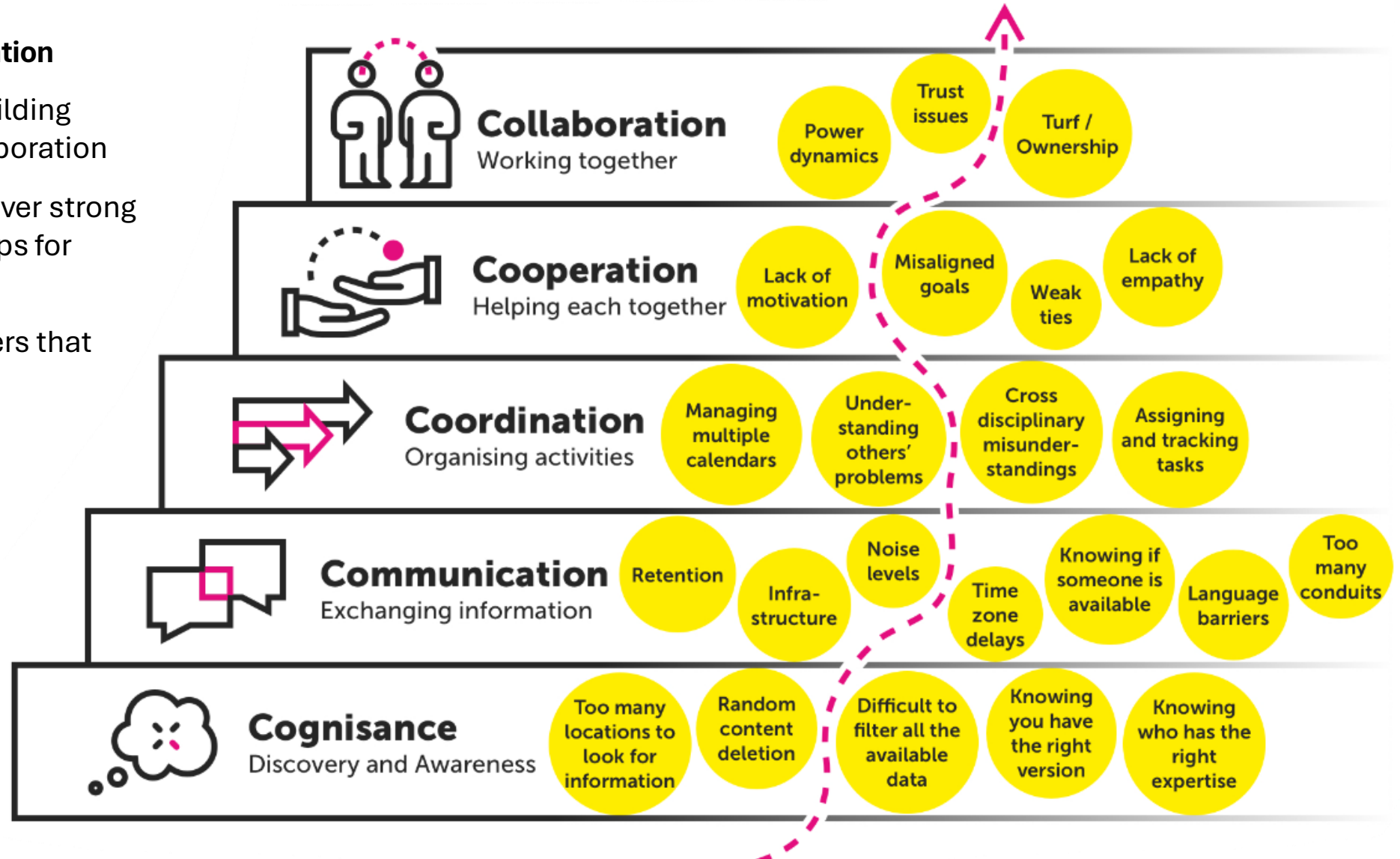
- The model outlines 5 building blocks to effective collaboration
- Each is important to deliver strong collaborative partnerships for delivery of action



# How can we **collaborate** to achieve this vision?

## A Framework For Collaboration

- The model outlines 5 building blocks to effective collaboration
- Each is important to deliver strong collaborative partnerships for delivery of action
- And have different barriers that need managing

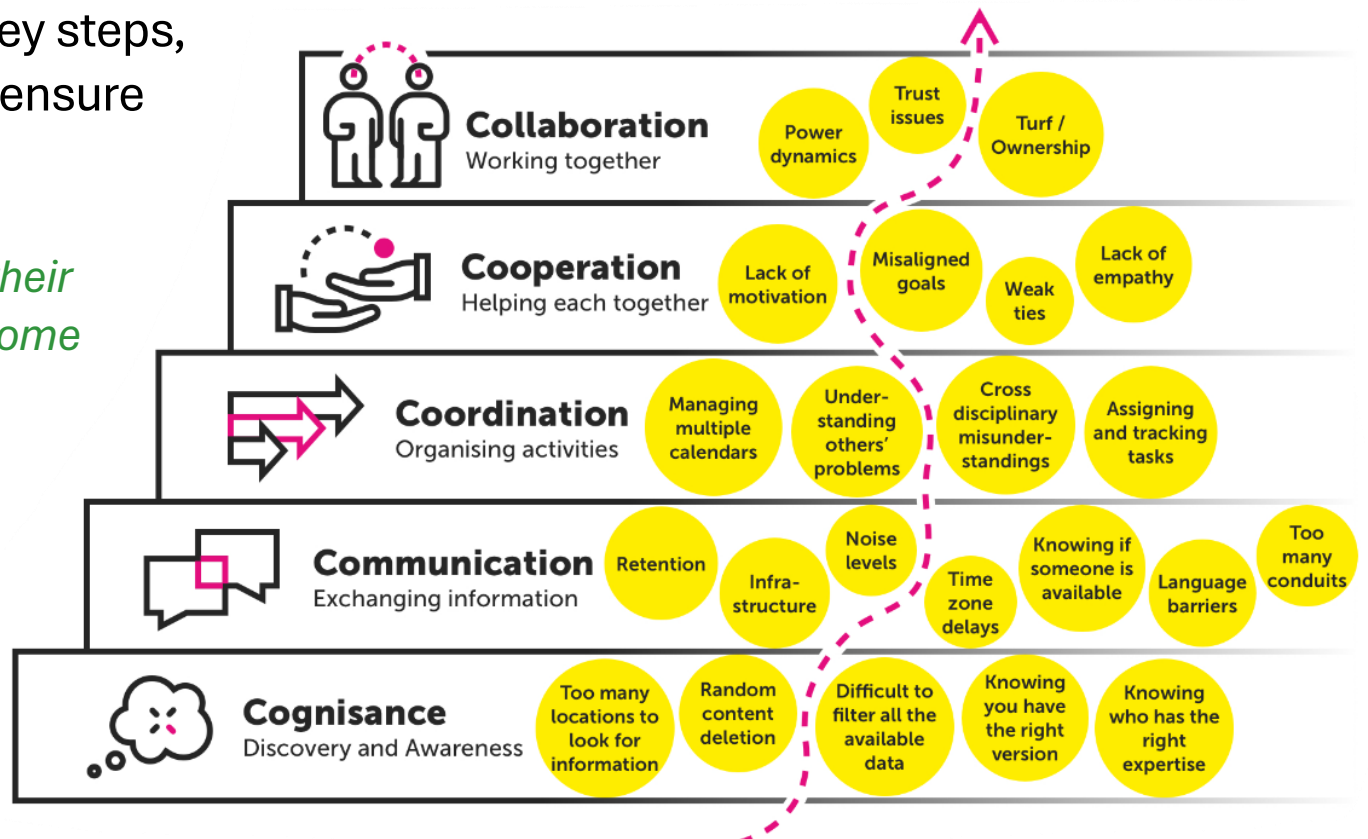


## Q2: How do we bring our vision and delivery partners together?

Thinking about the framework, what are the key steps, actions or interventions that can be taken to ensure each of the layers is delivered?

*Think about who might need to be involved, what their challenges might be, and how they could be overcome*

Write your actions on the flipchart



## Your top 5 next steps

In your tables, identify 5 actions to take from this workshop to progress action

Write them down on the flipchart and rank them by how important they are to do

1= most important

5= least important