



Hertfordshire's multiagency approach to supporting and empowering carers

Tim Anfilogoff Head of Community Resilience, Herts CCGs

Joy Watters Advanced Practitioner for Carers, Hertfordshire County Council

Roma Mills Acting CEO, Carers in Hertfordshire

Ted Maddex Senior Development Manager, Hertfordshire County Council

Identify

All agencies play their part in carer identification and onward referral

Welcome

ensuring carers feel valued and respected

Assess and Support

providing carer-friendly information and advice, and support in a way which best supports the carer

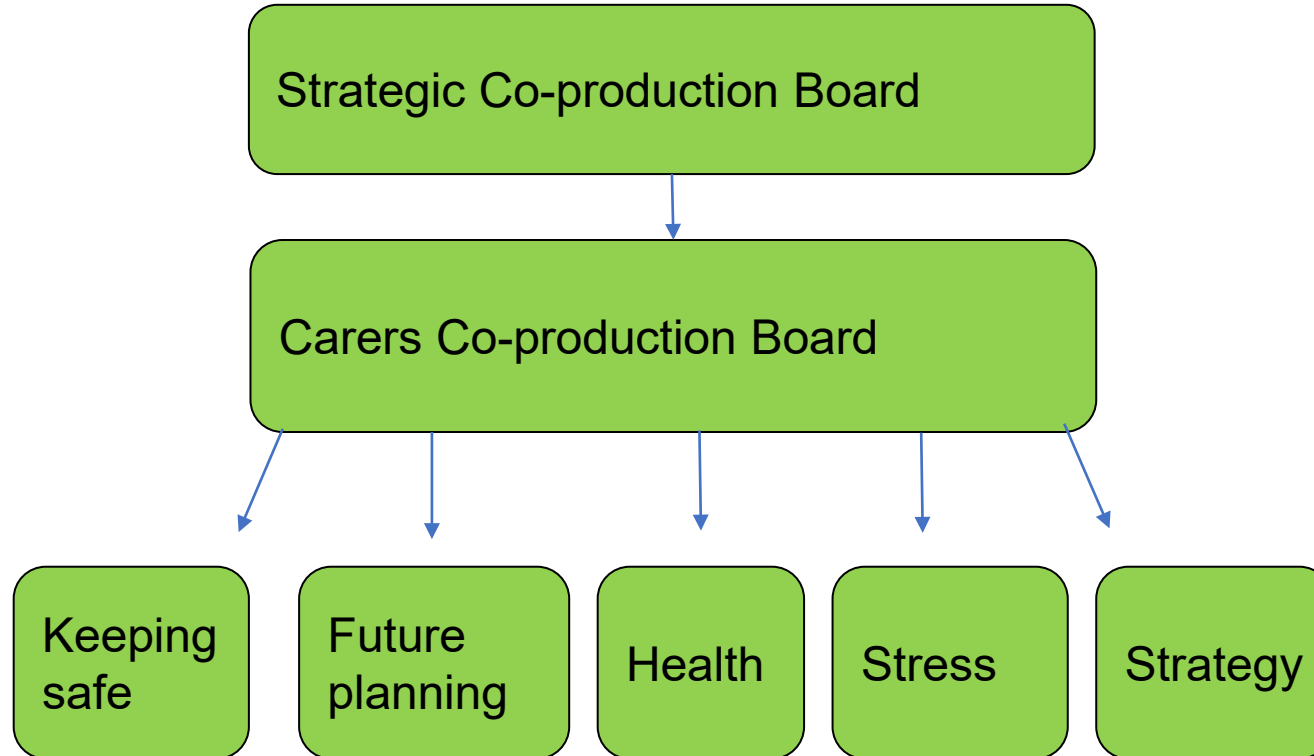
Involve

ensuring carers are listened to in relation to their caring role and have opportunities to influence services

Support through changes

making sure that carers are supported through complex changes eg bereavement, moving in and out of caring, transitions between services etc

Multi Agency Co-production Structure



Co-
produced
outcomes

Multi-agency carer
strategy

Leaflets- keeping safe and
planning for the future

Caring for Carers webinar

Projects led by Carers in Herts

Carer passports

Keeping in touch calls

Identifying carers for
vaccinations

Projects led by Carers in Herts

Resilience and Be Safe workshops

Carer trainer unit

Mentoring

Speaking Up

Projects led
by Adult
Care
Services

Connected lives model

Safeguarding training

Carers in case of
emergency plans

Projects led
by NHS

Vaccinations

Wellbeing checks

ICS Carers vision

Urgent breaks

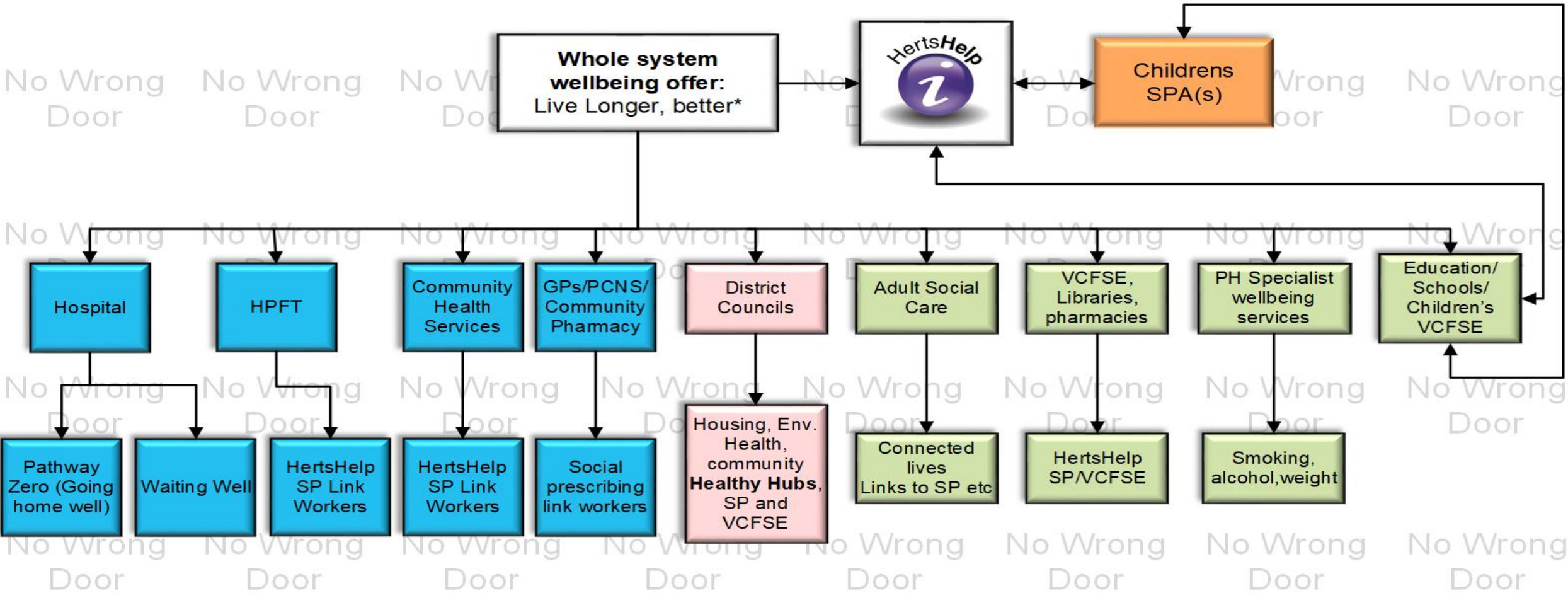
What do we mean by health creation?

'Health Creation is the process through which individuals and communities gain a sense of purpose, hope, mastery and control over their own lives and immediate environment; when this happens their health and wellbeing is enhanced.'



**The Health
Creation
Alliance**

Connecting to stay well: *"there is always someone who can help"*



* borrowed from Herts Sports Partnership as a placeholder

Role of Integrated Care System (ICS)

- Senior Responsible Officer for Carers in ICS
- First draft of carers' vision for ICS (fully integrated with county strategies)
- Looking at caring as a social determinant of health as part of population health management
- Carers' Alliance as part of Voluntary, Community, Faith and Social Enterprise Alliance (Embedding in ICS)
- Carers = focus of Health Creation Strategy under development
- Carers who work for NHS (1 in 3 staff) benefiting from NHSE/Carers UK partnership (digital platform etc)



Thanks; Any Questions?

