

GLA Demographic Modelling

Wil Tonkiss, Senior Demographic Analyst
Greater London Authority

Overview

- Origins
- GLA models
- Differences & Results:
 - ONS, DCLG, GLA
 - Migration
- How we can support authorities

Origins

- GLA population modelling for London since the 70s
- Why expand?
 - Availability of data
 - More robust model / more transparent
 - Demand from neighbouring authorities
 - Points raised at FALP EiP

Origins

PAS Guidance:

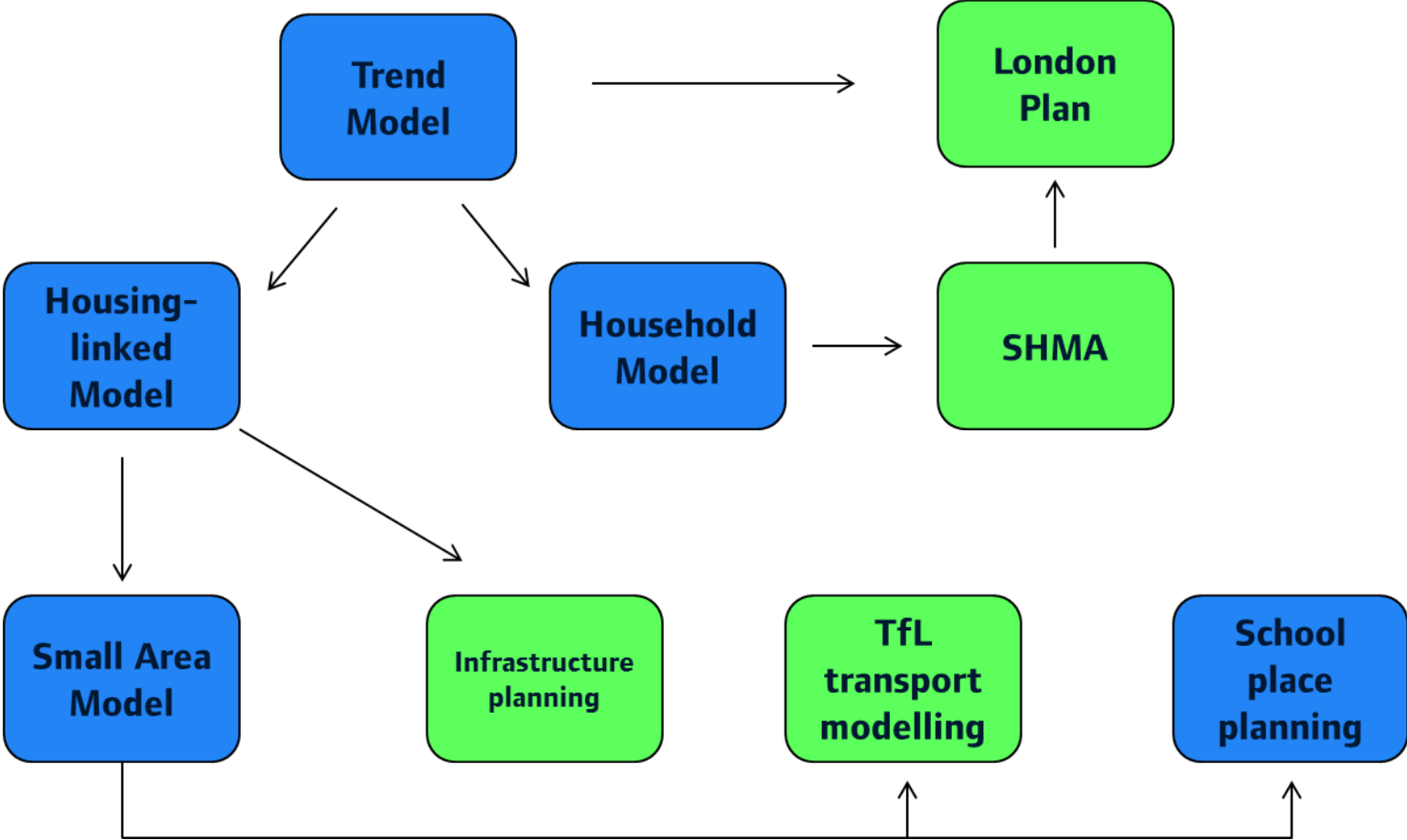
“Understanding the components of change and particularly the migration data going back as far as possible is very helpful and allows you to compare longer term rates with the more recent five or six-year trend.”

“It might be legitimate to vary the migration assumptions within the official projections if there is evidence to do so. However, any change in assumptions must be justified and set out as part of a transparent methodology.”

Planning on the Doorstep: Population

GLA Modelling

GLA Models



Releases

Currently available:

- 2015-based GLA projections
- 2014-based ONS & DCLG projections

Next releases:

- ONS 2016 mid-year estimates: 22nd June
- GLA 2016-based projections: Week of 10th July
- ONS 2016-based projections: Summer 2018

GLA Models

- Central Trend
- Short-term Trend
- Long-term Trend

- Population & Households
- Components of Change

Results & Differences

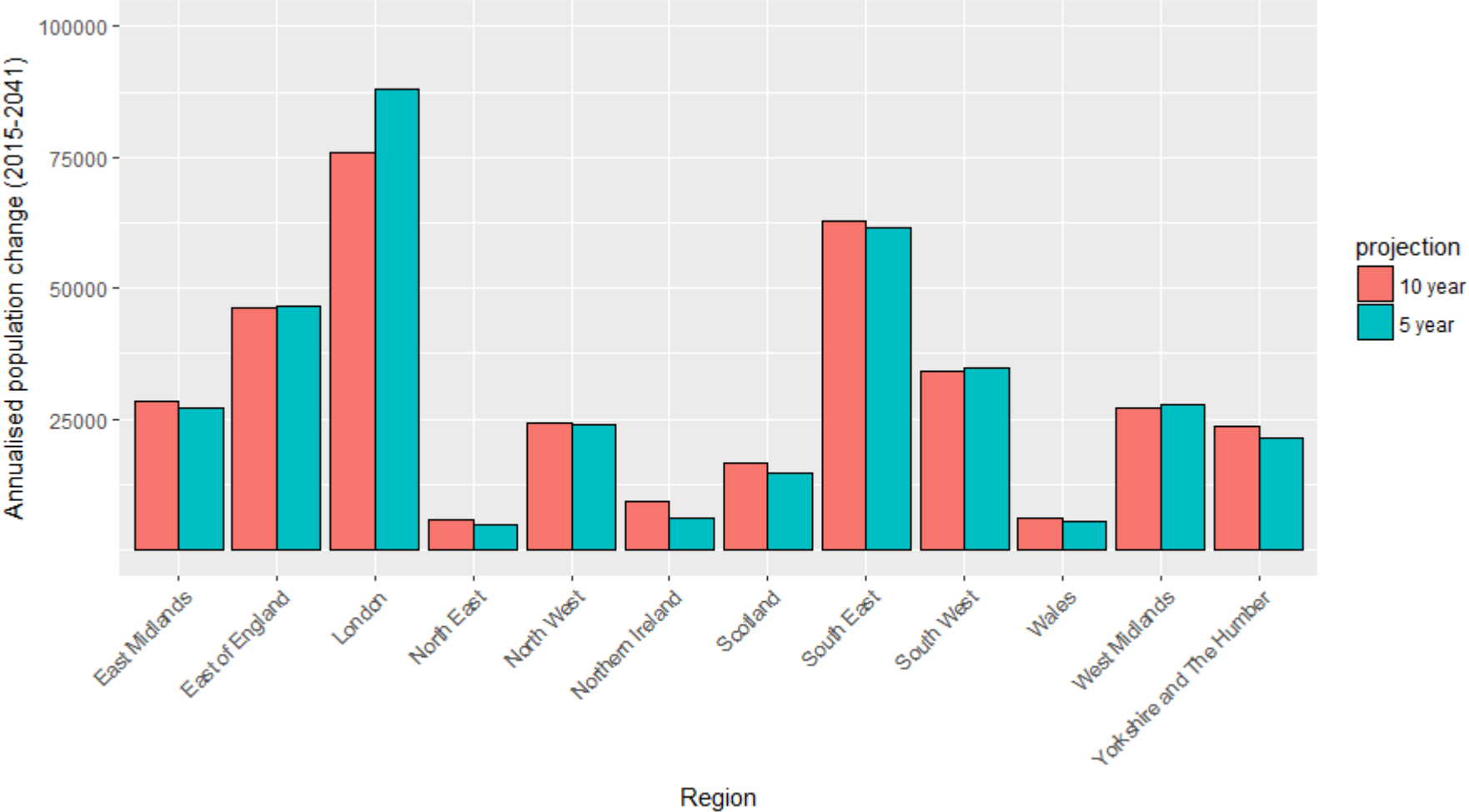
ONS & GLA: Differences

- Regional migration constraining
- National constraining
- Migration backseries

Model	Domestic	International
ONS	5	6
GLA Short	5	5
GLA Central	10	10
GLA Long*	15	15

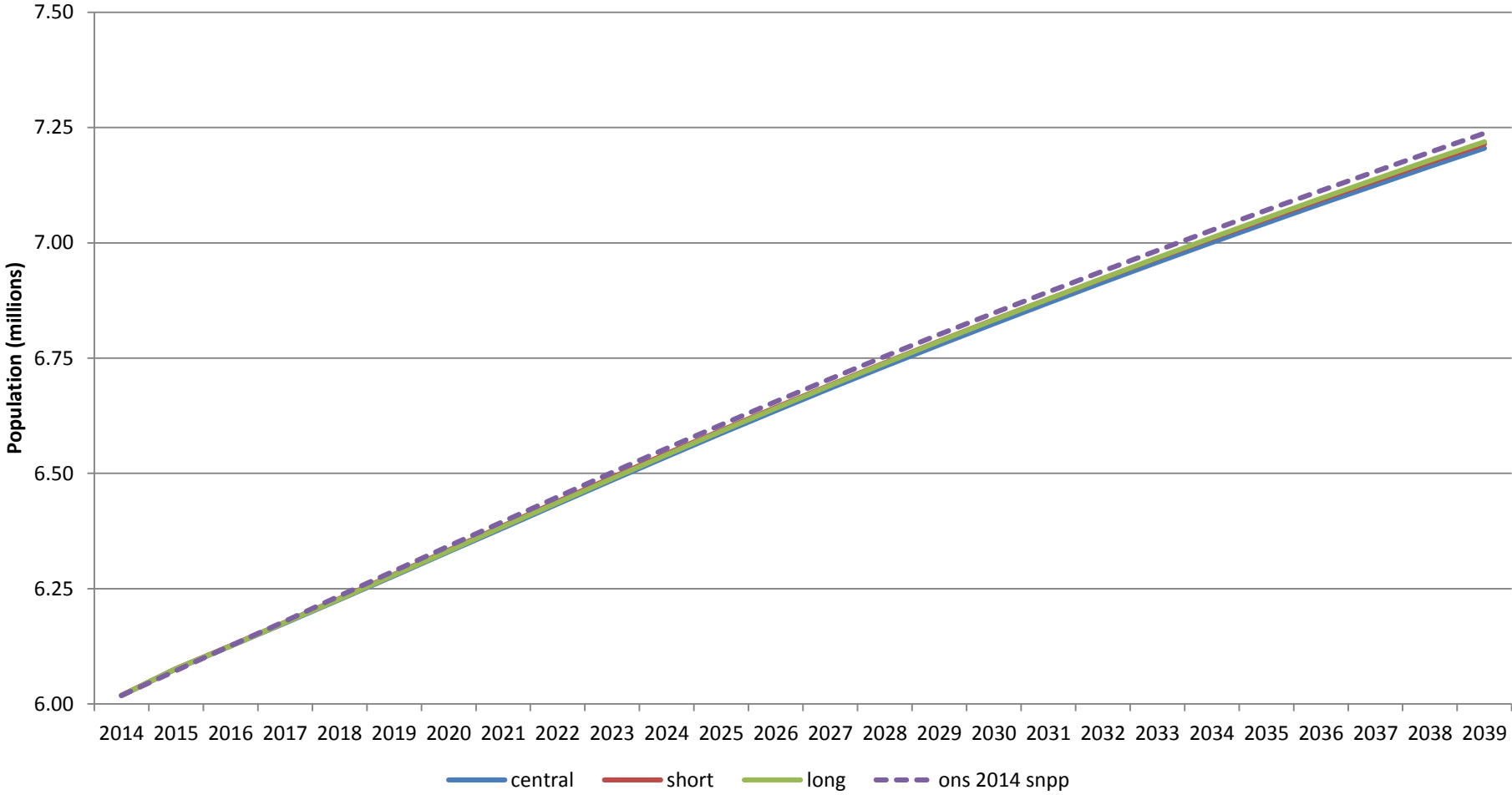
*2015-based 14 years

Trend model: national results



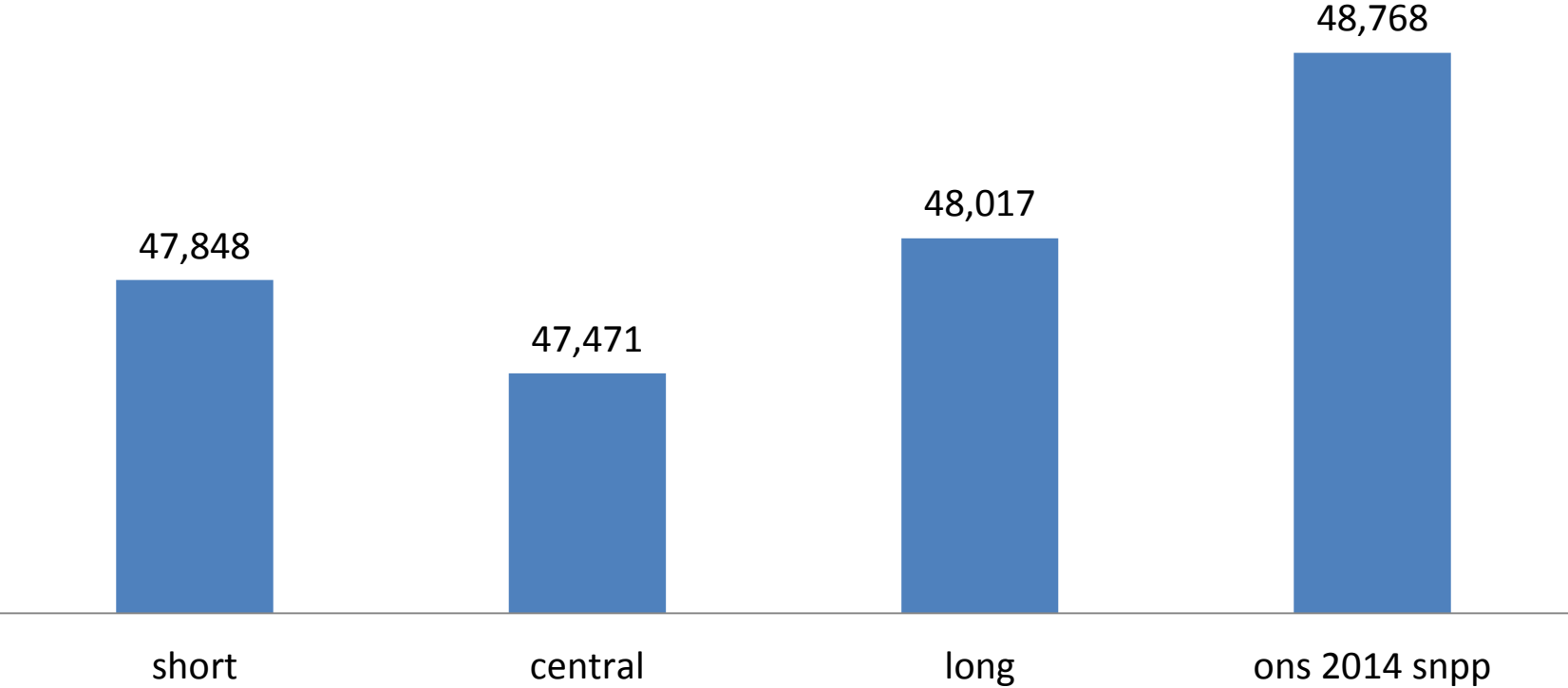
ONS & GLA: Projections

Projected population of East of England



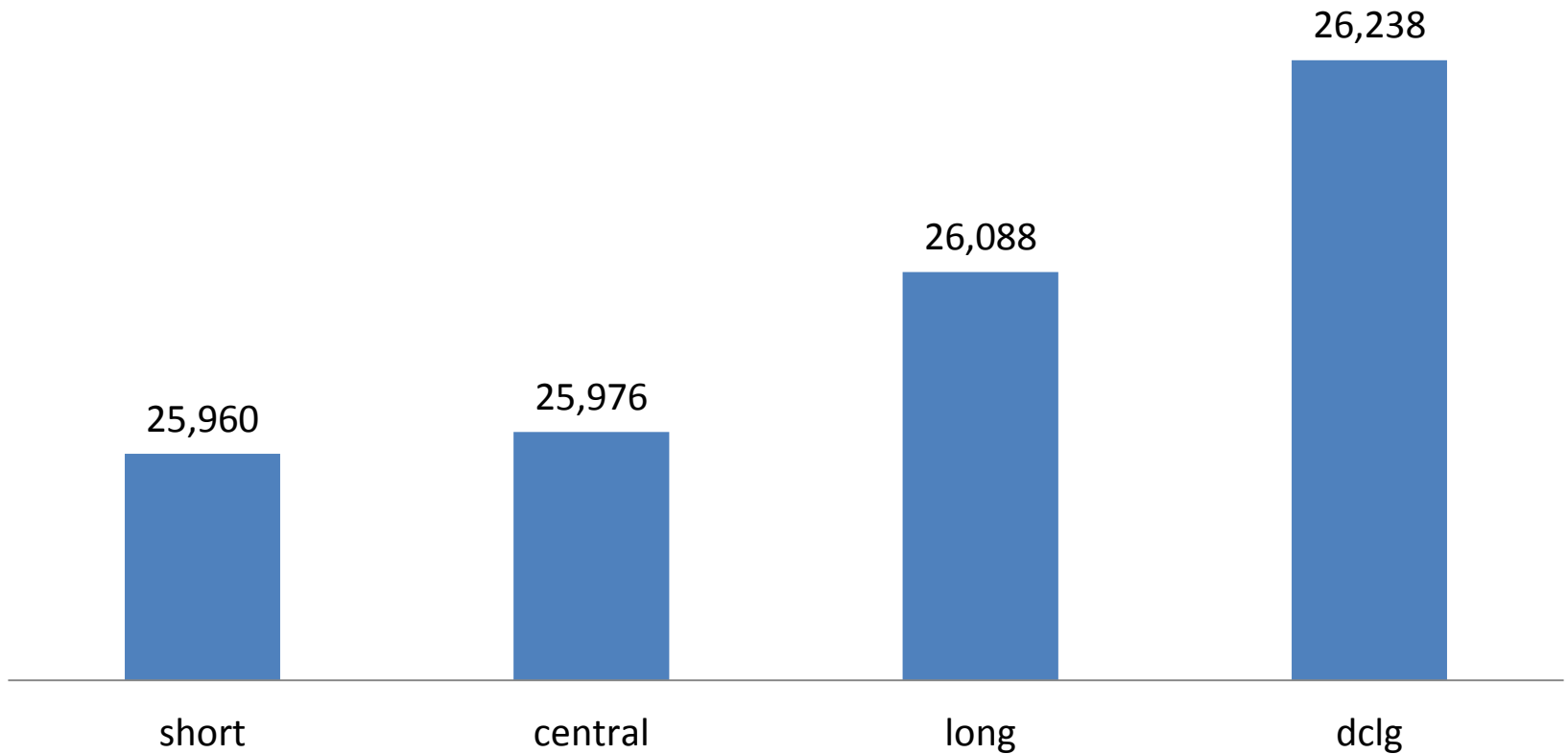
ONS & GLA: Projections

Annualised population growth 2014-2039
East of England



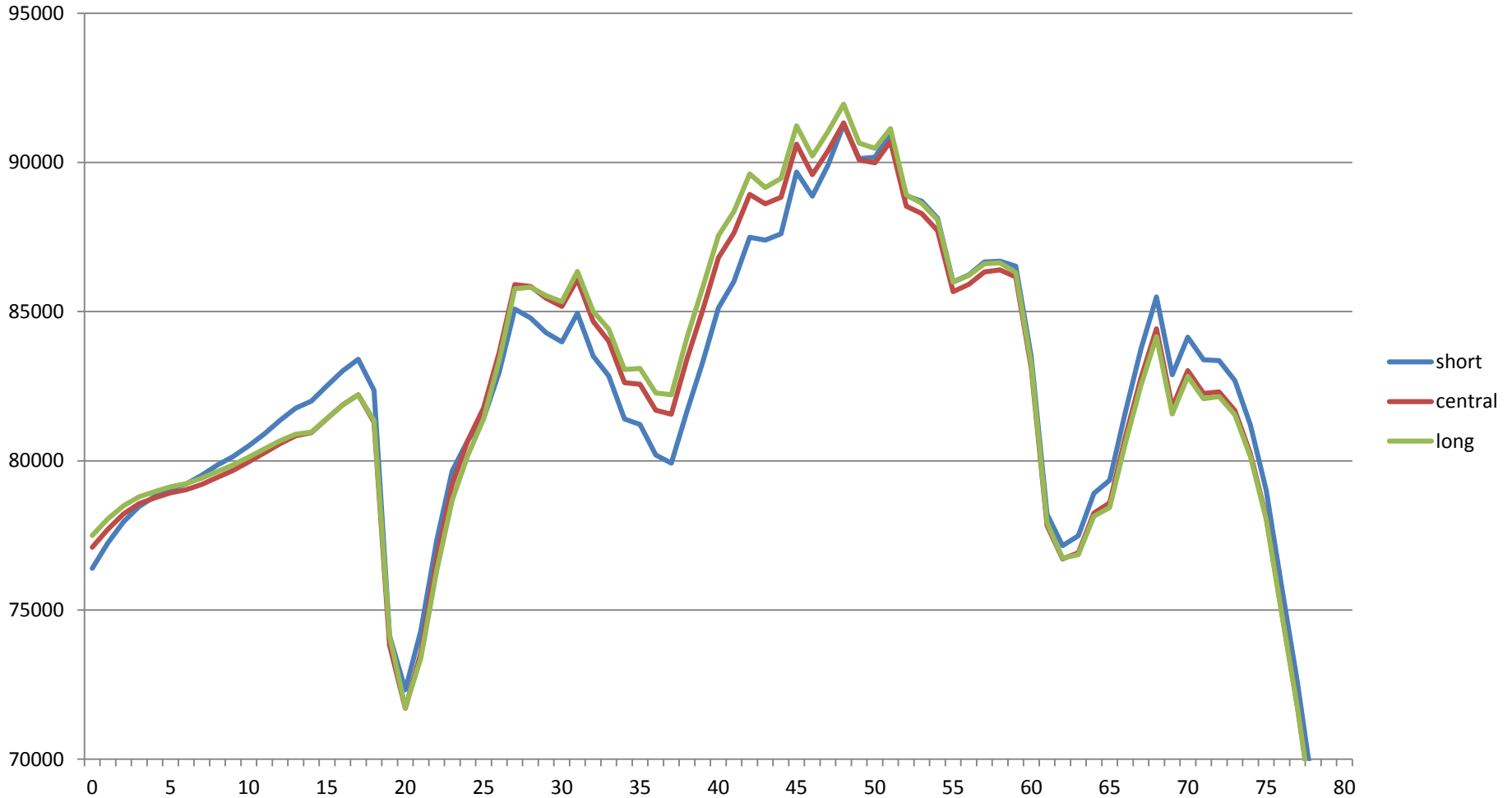
DCLG & GLA: Projections

Annualised household growth 2014-2039
East of England



Age Structure

East of England, 2039

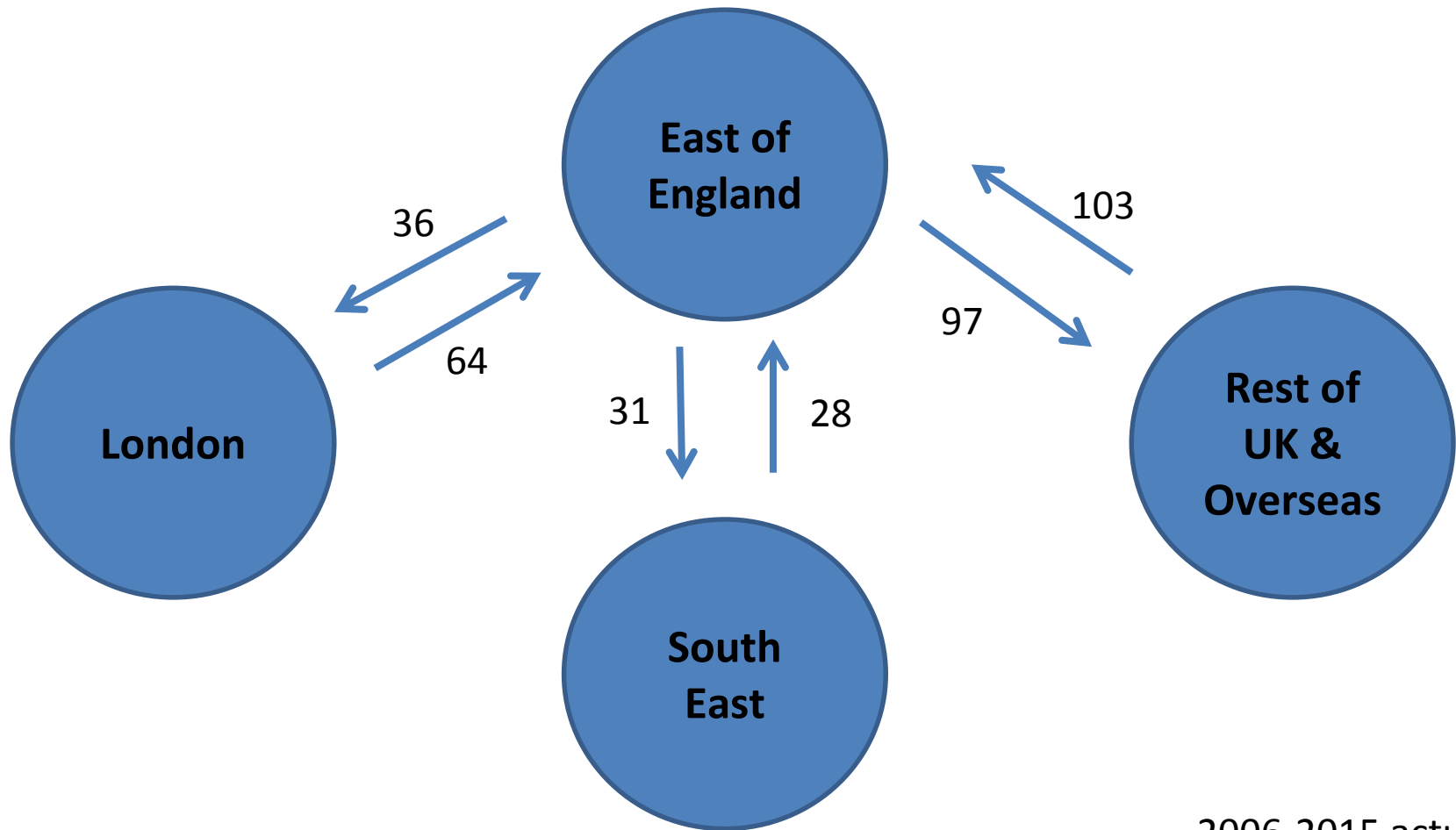


Migration

Avg. Net Flows (2009-13)

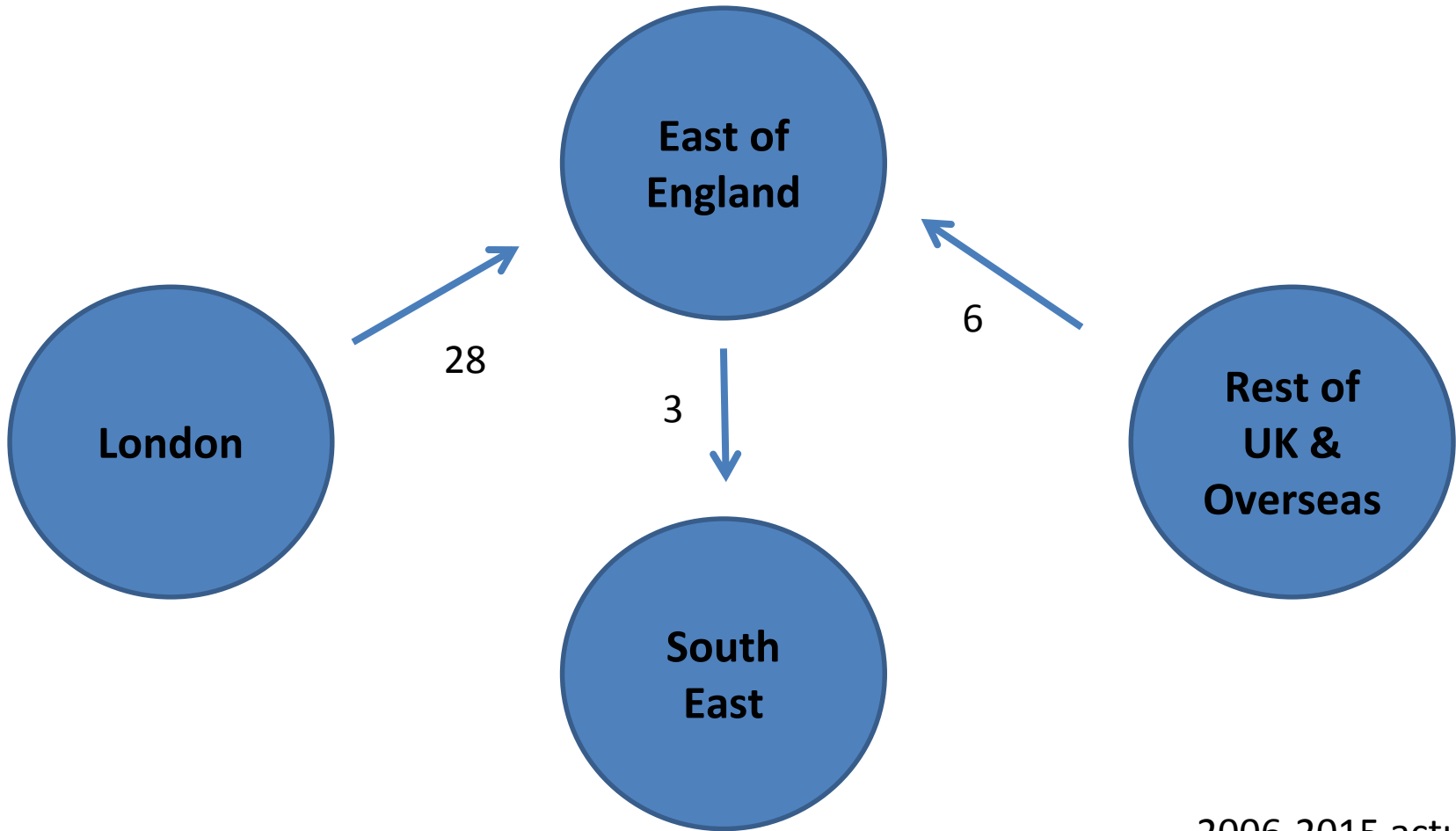


Average Gross Migration Flows



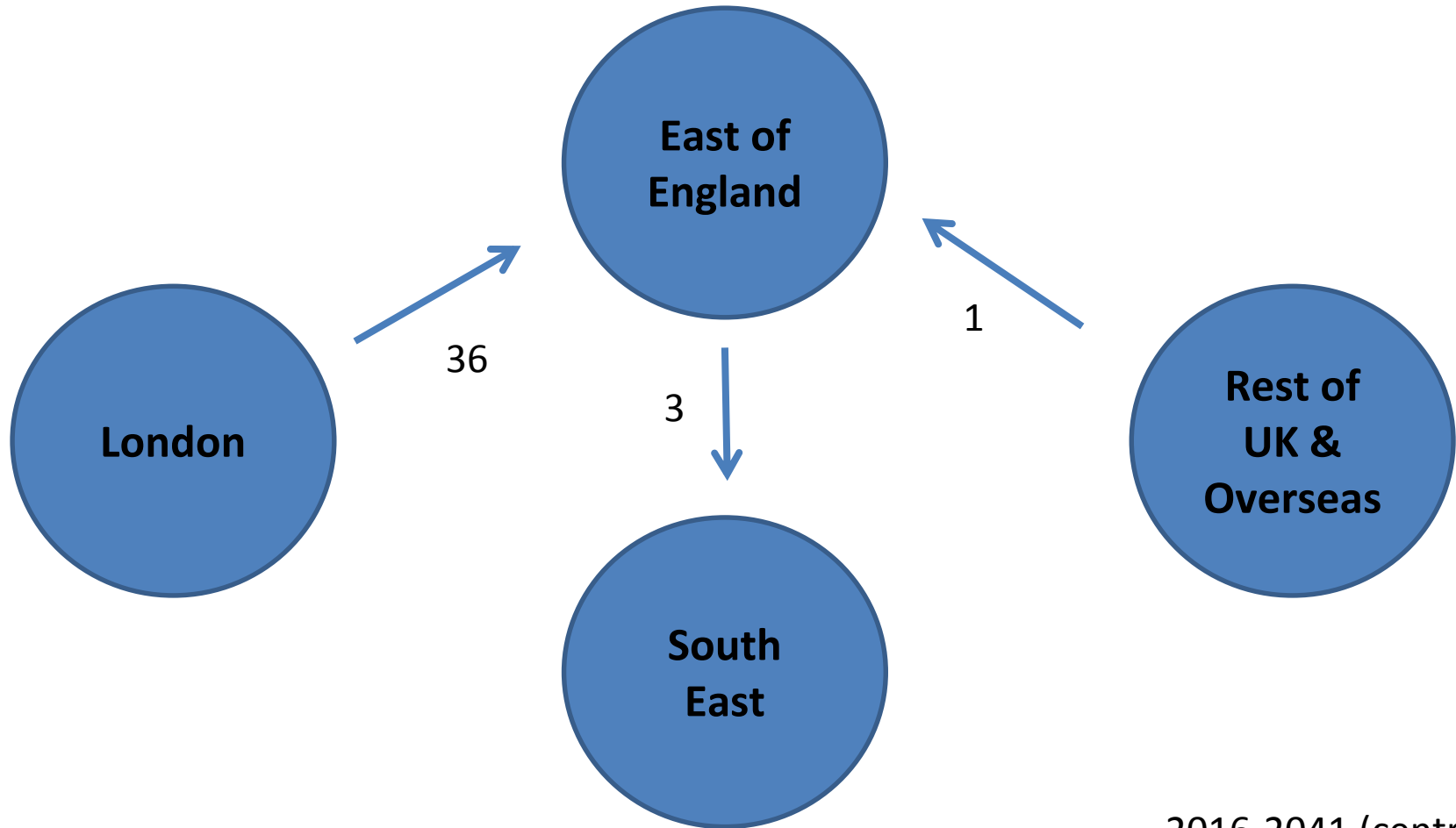
2006-2015 actuals

Average Net Migration Flows



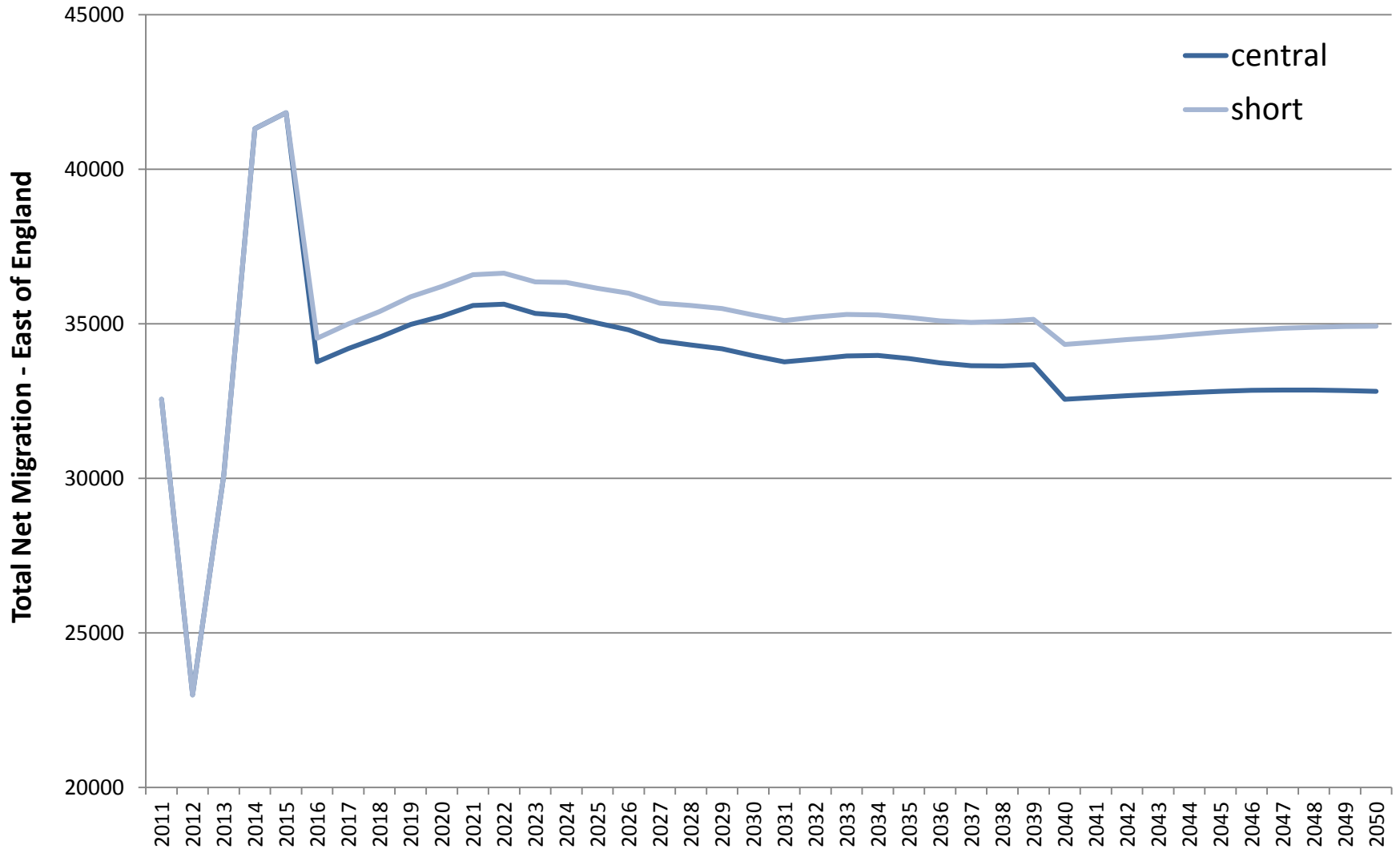
2006-2015 actuals

Average Net Migration Flows - Projected



2016-2041 (central)

East of England net migration



Releases

Currently available:

- 2015-based GLA projections
- 2014-based ONS & DCLG projections

Next releases:

- ONS 2016 mid-year estimates: 22nd June
- GLA 2016-based projections: Week of 10th July
- ONS 2016-based projections: Summer 2018

Documentation & Support

Methodology & Documentation

- Methodology documentation for all GLA models is available on the London Datastore:

<https://data.london.gov.uk/demography/population-projections/>

- University of Southampton independent review:

<https://data.london.gov.uk/dataset/projection-methodology-independent-review>

Supporting LAs

- There is **demand for variant projections** but no ONS commitment to their production
- We offer **unbiased output** using a comparable model
- Housing-led modelling: Potential for joint projects using **local housing trajectories**
- UPC: ability to include different **upc scenarios**

Contact

demography@london.gov.uk