



**East of England**  
Local Government Association

# **Introduction to the Wider South East Collaboration Programme**

James Cutting,  
East of England Programme Manager

---

# In 2011... Localism vs. strategic planning?

“Councils will have to replace the regional tier

Because:

- Development will happen
- Councils need to forecast population and economic growth
- Spatial change needs to be monitored
- Infrastructure planning demands a wider context

...And then there is: the duty to co-operate, LEPs, national infrastructure, SEA, Climate Change...”

---

# Also in 2011... London Plan

- “Will become the most up-to-date regional strategy
  - Still has housing targets – increased to meet need
  - Previous growth corridors supported
    - “The Mayor supports the development of the two growth areas designated by national Government and which fall partly within London – the Thames Gateway and the London-Stansted-Cambridge-Peterborough growth area. He will work with relevant agencies in London and neighbouring regions to support their development.” (para. 2.14)
    - “The Mayor will also help coordinate the development and implementation of policies (**encouraging use of tools like multi-area agreements**) for corridors that have been identified as being of importance to London and the wider city region” (para. 2.15)”
-

# Regional-scale planning without regional plans

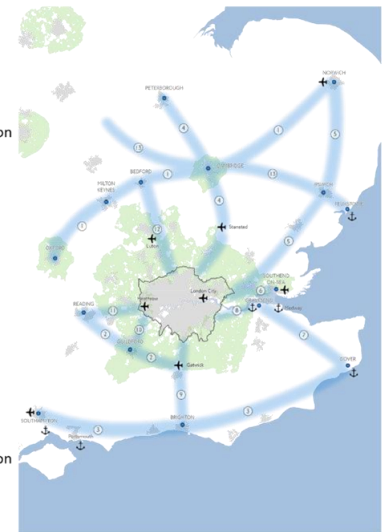
- The complex interactions with London and its planning processes provide a (fresh) impetus to look at the regional scale
- Groups of representative officers and elected members agreed themes for the Wider South East in 2015:
  - London Plan Review and Common Understanding of Evidence;
  - Barriers to Housing Delivery, and
  - Making the case for strategic infrastructure.
- Collaborative not a conventional approach (if there was such as thing)



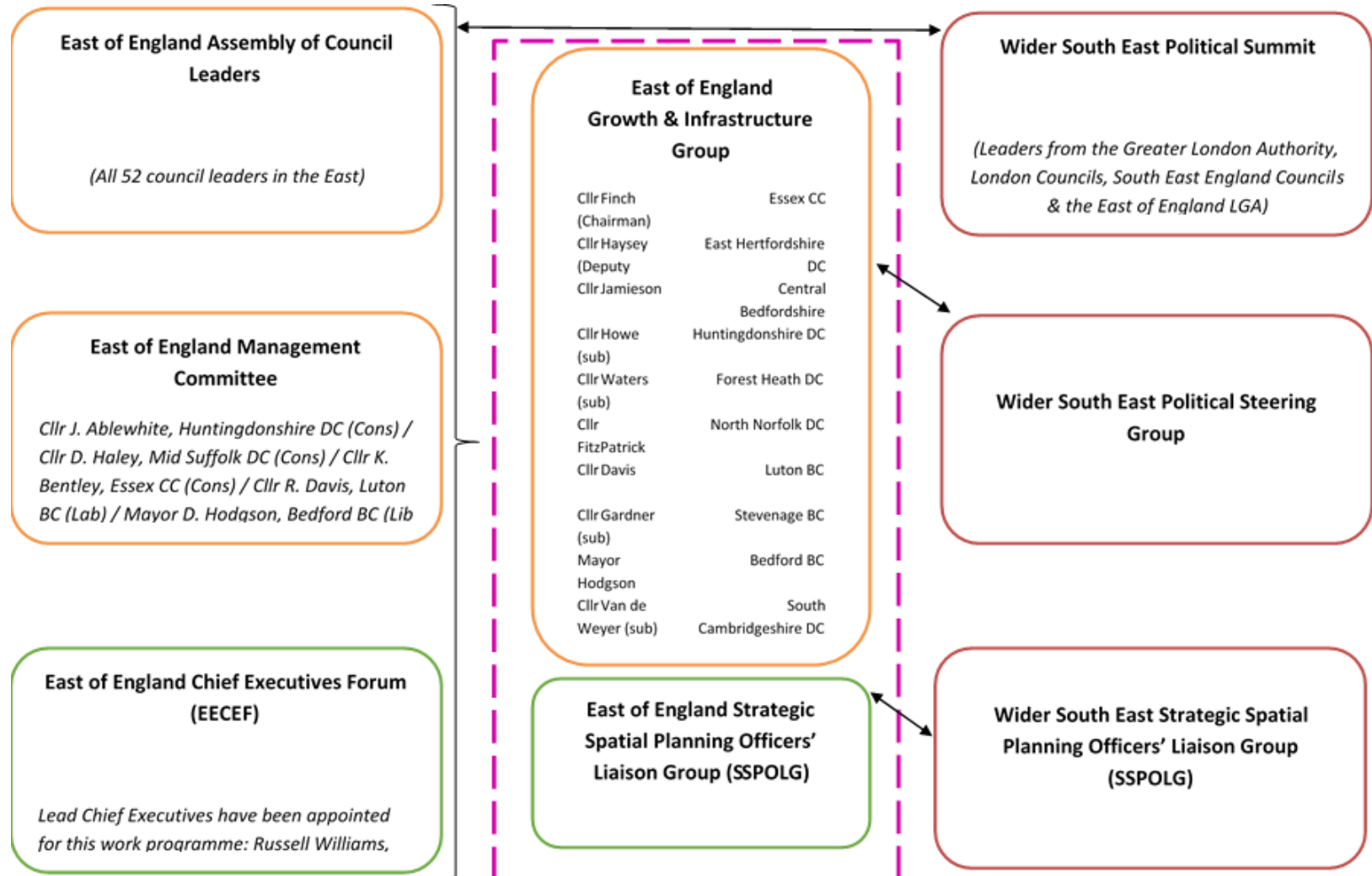
# Activities & Governance

- **London Plan Review and Common Understanding of Evidence**
  - GLA produced national demographic and household projection model
  - East of England commissioned LSE to review of migration evidence
- **Barriers to Housing Delivery**
  - Joint letters and meeting with Minister for Housing and Planning (who is also Minister for London)
- **Making the case for strategic infrastructure**
  - Identified 13 transport projects and corridors

1. East West Rail and new road link (Oxford - Cambridge)
2. North Downs Rail Link (Gatwick - Reading)
3. A27/M27/A259 and rail corridor (Dover - Southampton)
4. West Anglia Mainline and Crossrail 2 North (London - Stansted-Cambridge-Peterborough)
5. Great Eastern Mainline (London - Ipswich - Norwich)
6. Thames Gateway Essex: C2C and A13 (London - South Essex / London Gateway Port)
7. Thames Gateway Kent: Crossrail 1 extension East and HS1 route (London - North Kent - Channel Tunnel)
8. Lower Thames Crossing
9. Brighton Mainline (London - Gatwick - Brighton)
10. South West Mainline and Crossrail 2 South West (London - Surrey / southern access to Heathrow)
11. Great Western Mainline (London - Reading / western access to Heathrow)
12. Midlands and West Coast Mainline (London - Luton - Bedford / Milton Keynes)
13. Felixstowe - Nuneaton / Midlands



# Activities & Governance



# Emerging policy issues

- Complexity (technically and politically)
  - Economic – e.g. interaction of sectors
  - Local vs strategic reviews of green belt
  - Logistics and freight
  - Water resources
  - Waste
  - Minerals
-

Find out more:

<https://www.london.gov.uk/about-us/organisations-we-work/policy-and-infrastructure-collaboration-across-wider-south-east>

---